

Macchi MC.205 Veltro

No 2519 model kit
modèle réduit



1:32
scalascale

**UPGRADED
MOULDS**

Macchi MC.205 Veltro

The Macchi M.C. 205 Veltro is considered the best Italian fighter of World War II. The evolution of the “Folgore” retained the excellent aeronautical design of its predecessor and was equipped, like other fighters of the “Series 5”, with the German Daimler-Benz DB605 engine. The powerful V12 engine, also produced under license by Fiat, allowed the Veltro to reach a maximum speed of 640 km/h. Fast, manoeuvrable, and well-armed, with 2 × 12.7 mm machine guns in the nose and 2 × 20 mm cannons in the wings, it was capable of fighting on par with the best Allied fighters of the period, such as the American P-51 Mustang. It entered service with the Regia Aeronautica in the early months of 1943. After the armistice of September 8, it was used, until the end of the conflict, by both the flight units of the Italian Social Republic and those of the Co-Belligerent Air Force

Model Kit Features

- Super-detailed cockpit with 3D decals
- Finely detailed engine and nose gun bay
- Detailed landing gear with optional wells covers
- PE parts for engine, flaps, cockpit and overall detailing
- Realistic panel lines and rivets
- Moveable wings and tail ailerons
- Open or closed flaps
- Canopy double sided and wheels masking sheet
- Realistic smoke rings decals with application guide
- Colored painting and decals guide
- Super decals sheet for 8 versions



A. Serie III, MM 92166, Regia Aeronautica, 378a Squadriglia, 155o Gruppo Autonomo, Capoterra, Sardinia, July 1943.



B. Serie III, MM 92186 (?), Regia Aeronautica, 85a Squadriglia, 18o gruppo, 3o Stormo, Cerveteri (Roma), Italy, July 1943.

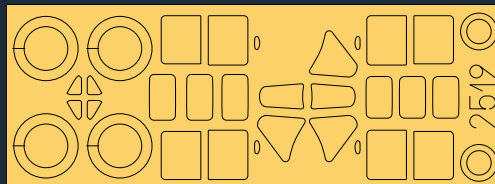
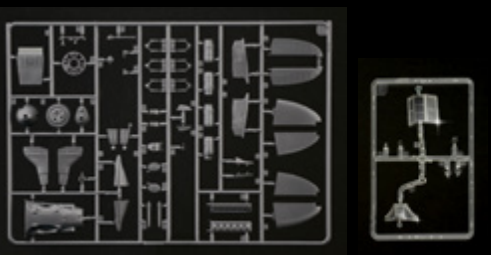
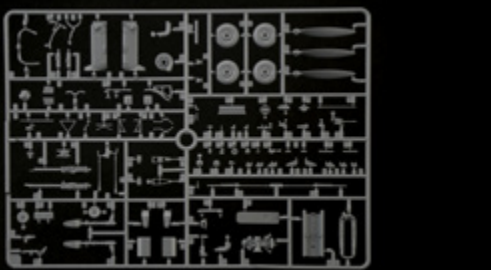
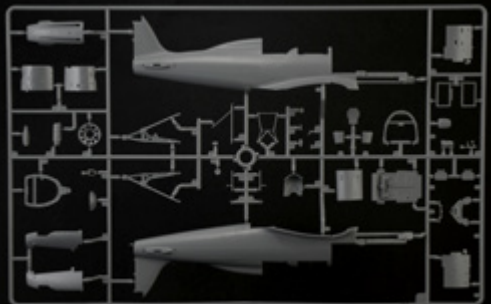
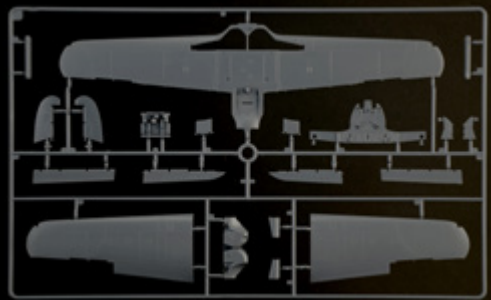


C. Serie III, MM 92178, Regia Aeronautica, 97a Squadriglia, 9o Gruppo, 4o Stormo, Brindisi, Italy, October 1943.

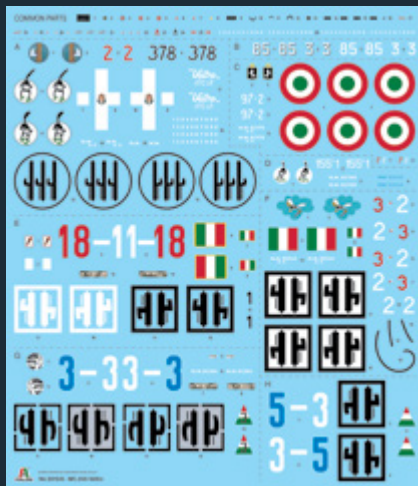


D. Serie III, MM 92163, Regia Aeronautica, 155o Gruppo, 51o Stormo, Leverano Airfield (LE), February 1944.

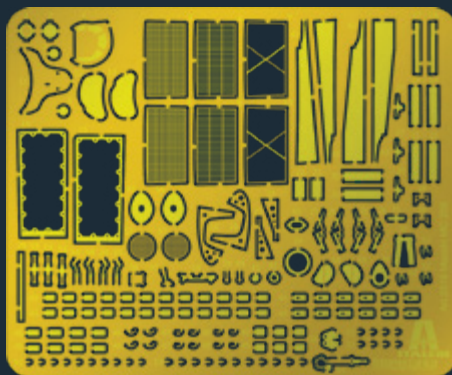
Sprues



Canopy double sided and wheels masking sheet



Super decals sheet for 8 versions



PE parts for engine, flaps, cockpit and overall detailing



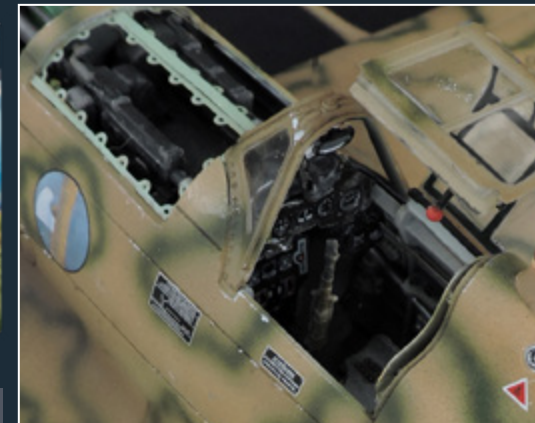
Realistic smoke rings decals with application guide



Cockpit 3D decals



Colored painting and decals guide inside



E. Serie III, MM 92287, A.N.R., 1a Sq. "Antonio Larsimont (Asso di Bastioni)" 1o Gr. Caccia, Reggio dell'Emilia, Italy, april 1944.



F. Serie III, MM 92242, A.N.R., 2a Sq. "Guido Bobba (Vespa Incacchiata)", 1o Gr. Caccia, Campofornido (UD), Italy, march 1944.



G. Serie III, MM 92264 (?), A.N.R., 3a Sq "Dante Ocarso (Arciere)", 1o Gr. Caccia, Reggio dell'Emilia, march 1944.



H. Serie VI, MM 98219/98224 (?), A.N.R., 3a Sq "Dante Ocarso (Arciere)", 1o Gr. Caccia, Reggio dell'Emilia, june 1944.